

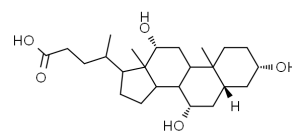


上海吉至生化科技有限公司
Shanghai Acmec Biochemical Technology Co, Ltd.

Product Specifications

Structure:

Name	猪胆盐
EN Name	Bostaurusdomesticus
Catalog	B23920
CAS	8008-63-7
M.F.	C ₂₄ H ₄₀ O ₅
M.W.	408.57



Test	Norm
Appearance	Brown-yellow powder
Assay	60%
Solubility	30mg/mL, H ₂ O, Clear, light brown solution

Shanghai Acmec Biochemical Co, Ltd.
1301 Rm, NO.1, 1588 Wangyuan South Rd, Fengxian, Shanghai



产品仅供科研!