

Appearance
 White Powder or Crystals
 Purity(T)
 99%
 Proton NMR Spectrum
 Conforms to Structure
 pH
 7-9
 Heavy Metals(Pb)
 0-5ppm
 Ammonia (Nh3)
 0-0.003%
 Sulfate(So4)
 0-0.005%
 Calcium(Ca)
 0-0.005%
 Chlorine(Cl)
 0-0.003%
 Insoluble Matter In Water
 0-0.005%
 IRon(Fe)
 0-5ppm

Hi, 欢迎来到吉至生化, 品质好, 服务好! 热线: 400-900-4166

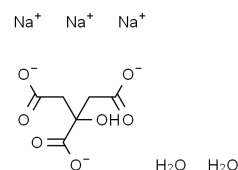


上海吉至生化科技有限公司
 Shanghai Acme Biochemical Technology Co.,Ltd.

Product Specifications

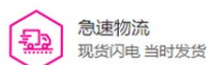
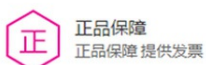
Structure:

Name	柠檬酸钠, 二水
EN Name	Sodium citrate dihydrate
Catalog	S90791
CAS	6132-04-3
M.F.	C H Na O · 2(HO)
M.W.	258.0721802



Test	Norm
Appearance	White Powder or Crystals
Purity(T)	99%
Proton NMR Specturm	Conforms to Structure
pH	7-9
Heavy Metals(Pb)	0-5ppm
Ammonia (Nh3)	0-0.003%
Sulfate(So4)	0-0.005%
Calcium(Ca)	0-0.005%
Chlorine(Cl)	0-0.003%
Insoluble Matter In Water	0-0.005%
IRon(Fe)	0-5ppm

Shanghai Acmecc Biochemical Co.,Ltd.
1301 Rm,NO.1,1588 Wangyuan South Rd,Fengxian,Shanghai



产品仅供科研!



www.acmcc-e.com



400-900-4166