

Anti-CDK1 Polyclonal Antibody

Cat: AC50594

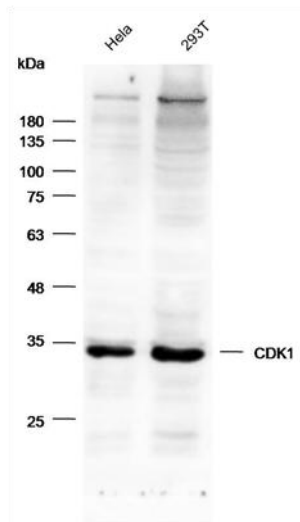
Summary:

- 【Product name】** : Anti-CDK1 antibody **【Source】** : Rabbit
- 【Isotype】** : IgG **【Species reactivity】** : Human, Mouse, Rat
- 【Swiss Prot】** : P06493 **【Gene ID】** : 983
- 【Calculated】** : MW: 34kDa **【Observed】** : MW: 34kDa
- 【Purification】** : Affinity purification
- 【Tested applications】** : WB IHC IF
- 【Recommended dilution】** : WB 1:500-2000. IHC 1:50-100. IF 1:50-200.
- 【WB Positive sample】** : HeLa, 293T
- 【IHC Positive sample】** : Mouse brain tissue
- 【Subcellular location】** : Cytoplasm Mitochondrion Nucleus centrosome cytoskeleton microtubule organizing center spindle.
- 【Immunogen】** : A synthetic peptide of human CDK1.
- 【Storage】** : Shipped at 4°C. Upon delivery aliquot and store at -20°C

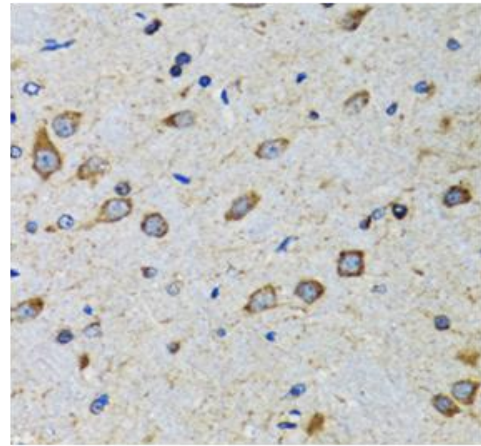
Background:

The protein encoded by this gene is a member of the Ser/Thr protein kinase family. This protein is a catalytic subunit of the highly conserved protein kinase complex known as M-phase promoting factor (MPF), which is essential for G1/S and G2/M phase transitions of eukaryotic cell cycle. Mitotic cyclins stably associate with this protein and function as regulatory subunits. The kinase activity of this protein is controlled by cyclin accumulation and destruction through the cell cycle. The phosphorylation and dephosphorylation of this protein also play important regulatory roles in cell cycle control. Alternatively spliced transcript variants encoding different isoforms have been found for this gene.

Verified picture



Western blot analysis with CDK1 antibody diluted at 1:1000



Immunohistochemistry of paraffin-embedded Mouse brain tissue with CDK1 antibody diluted at 1:100