

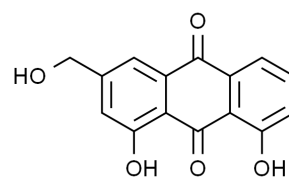


上海吉至生化科技有限公司
Shanghai Acmec Biochemical Technology Co, Ltd.

Product Specifications

Structure:

Name	芦荟大黄素
EN Name	Aloe-emodine
Catalog	A85630
CAS	481-72-1
M.F.	C ₁₅ H ₁₀ O ₅
M.W.	270.24



Test	Norm
Appearance	Earth-yellow solid
Purity	≥95%

Shanghai Acmec Biochemical Co, Ltd.
1301 Rm, NO.1, 1588 Wangyuan South Rd, Fengxian, Shanghai



产品仅供科研!