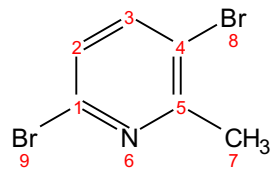
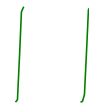


B7-21947-98-8.91.fid
B7-39919-65-8 CDC13 1H



7.53
7.52
7.26
7.09
7.09
7.08
7.08

2.53



1.00

1.00

3.00

15.0 14.5 14.0 13.5 13.0 12.5 12.0 11.5 11.0 10.5 10.0 9.5 9.0 8.5 8.0 7.5 7.0 6.5 6.0 5.5 5.0 4.5 4.0 3.5 3.0 2.5 2.0 1.5 1.0
f1 (ppm)